



---

# DeBoer Park Construction Update

Replacement of the pedestrian bridge, storm system upgrades, and gulch restoration

# Agenda

- Introductions
- Background
- Planned Improvements
- Schedule
- Construction Impacts
- Q & A

# Introductions

- Adam Lind, Trails Program Manager
- Brittany White, DPR Project Manager
- Jason Wennen, DOTI Design PM
- Blake Russo-Nixon, DOTI Construction PM
- Derek Clark, MHFD Project Manager

# Project Background

- Pedestrian Bridge
- Storm System
- Gulch Restoration

# Background-Ped Bridge

- DeBoer Park



# Background-Ped Bridge

- DeBoer Park Pedestrian Bridge closed in 2023 due to structural issues
- Unexpected closure, bridges inspected every three years
- No funding available at that time to immediately start redesign

# Background-Ped Bridge



# Background-Ped Bridge

- DPR Partnered with MHFD to start design in 2024
- Bridge is over Harvard Gulch and in the floodway and floodplain
- New design has to have 0.00” impact to flood elevation
- Required additional design time for hydraulic modeling, analysis, and permitting

# Background-Ped Bridge

- Construction only allowed during low-flow season from October to April to minimize risk of a significant flood event during construction
- Design is complete and construction planned to begin this fall on the ped bridge

# Background-Storm System

- Existing Storm System
  - 19" x 30" pipe in York Street
  - 90-degree turn into 15" pipe
  - Single Inlet
  - Outfall into Harvard Gulch



# Background-Storm System

- The CCD Storm Drainage Master Plan identified improvements in York Street.
- The Design Team included some of these improvements that could be designed in time for low-flow season implementation.
  - This includes larger storm inlets and larger outfall pipes to Harvard Gulch.
  - This will not solve the flooding in York Street but it will help in minor storms.

# Background-Gulch Restoration

- Channel Improvements to Harvard Gulch at DeBoer Park originally constructed in 2001
- Original project replaced existing concrete pan with higher capacity grouted boulder lined channel to increase flood conveyance and improve park aesthetics
- Over time, sediment accumulation and vegetation overgrowth reduced ability of the waterway to flow correctly (beaver activity compounded problem)

# Background-Gulch Restoration



December 2002



June 2025

# Improvements

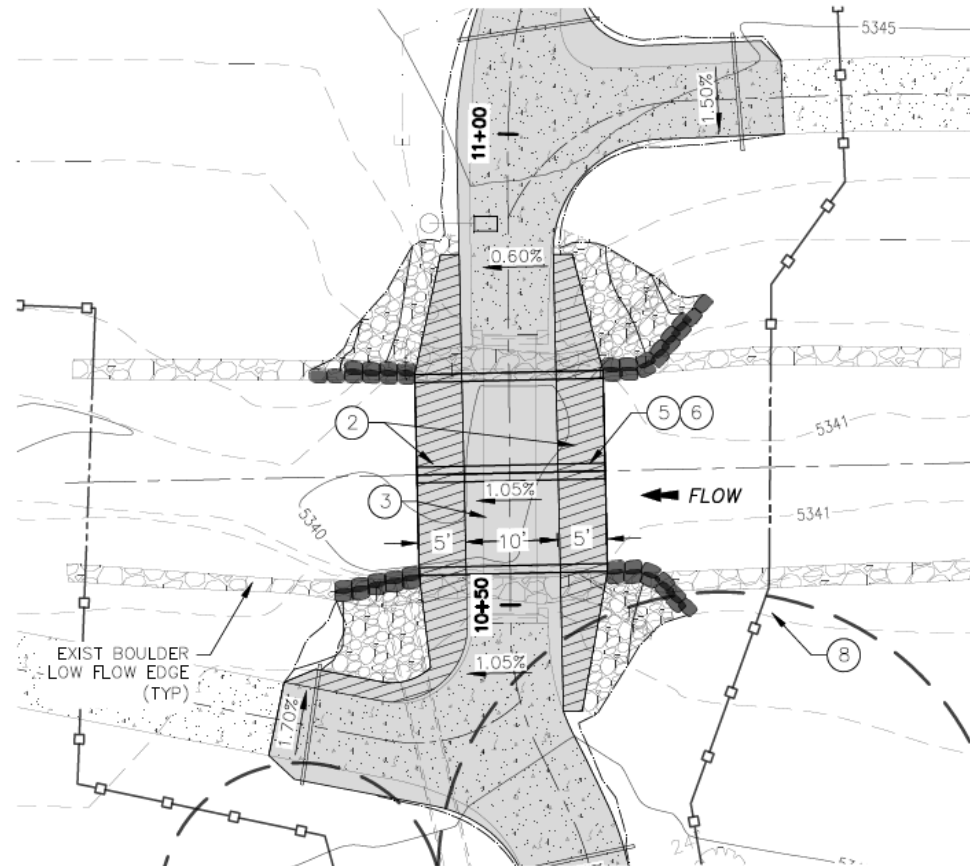
- Pedestrian Bridge
- Storm System
- Gulch Restoration

# Improvements-Ped Bridge

- New bridge will be a low flow crossing
  - Have lots of these across Denver
- Same Location
- This style of bridge was required due to floodplain updates and constraints
- Bridge will include 10' wide concrete trail with 5' wide rumble strips, no railings

# Improvements-Ped Bridge

- Low flow crossing is designed to allow normal flows to go underneath bridge
- Higher flows will overtop bridge until waters recede



# Improvements-Ped Bridge



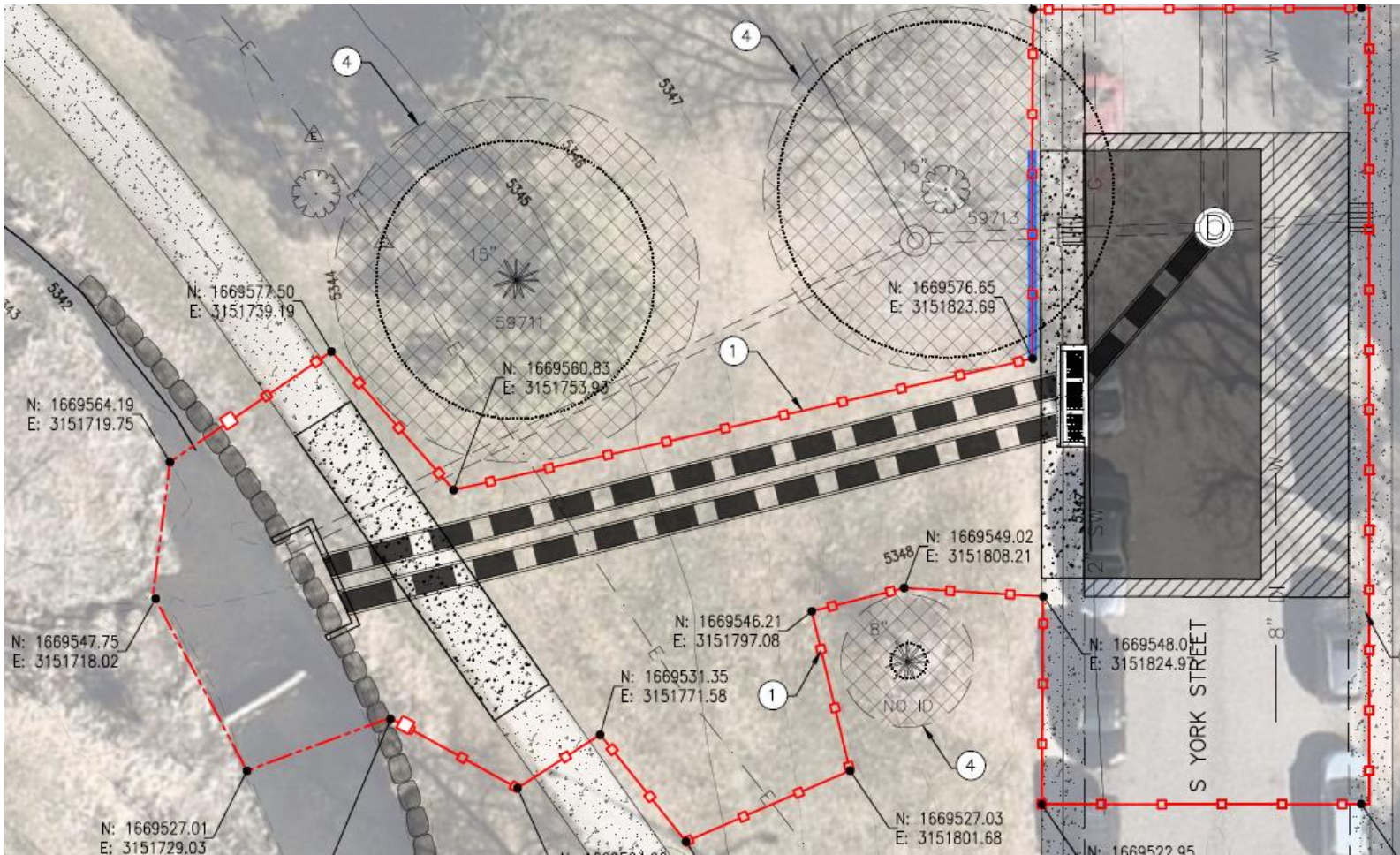
# Improvements-Ped Bridge

- Project will also include widening of trail segments that are being rebuilt
- New solar light to replace the existing Xcel light

# Improvements-Storm System

- Existing Storm System
  - 19"x 30" pipe in York Street
  - 90-degree turn into 15" pipe
  - Single Inlet
  - Outfall into Harvard Gulch
- New Storm System
  - 45° turn into (2) 19"x 30" pipes
  - Triple Inlet
  - Outfall into Harvard Gulch

# Improvements-Storm System

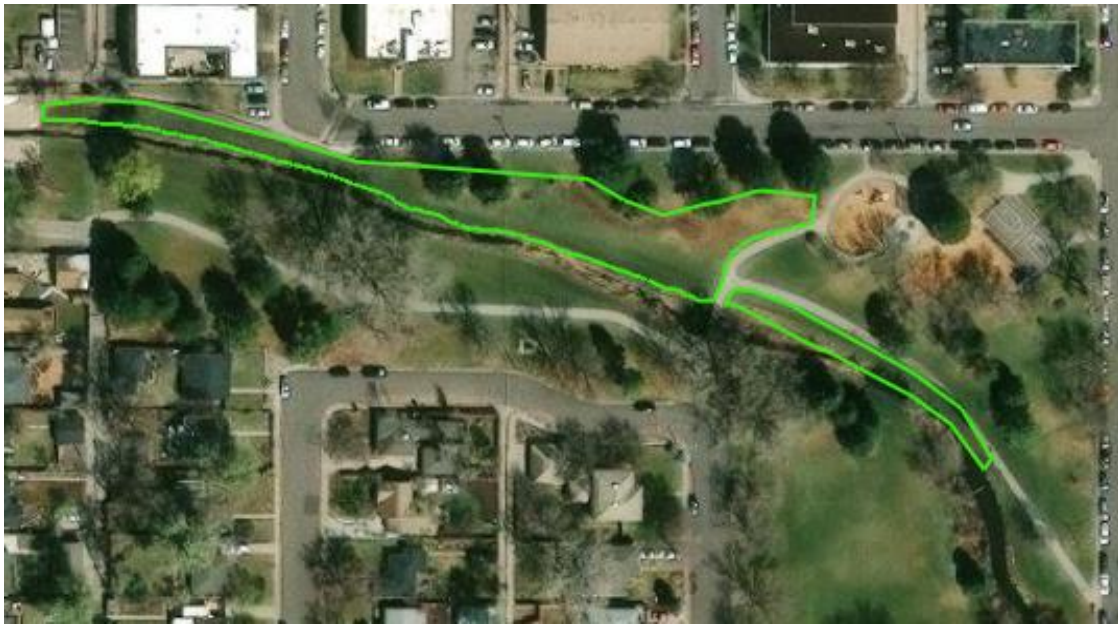


# Improvements-Gulch Restoration

- Restore original design channel capacity
- Facilitate moving water downstream and away from York Street storm system outfall (minor, more frequent storm events)
- Enhancing ecological habitat and improving water quality
- Improve stream aesthetic value
- Long-term monitoring of channel vegetation and beaver activity

# Improvements-Gulch Restoration

- Landscape transformation of low use turfgrass near the disturbed parts of the channel
- Species you may see are buffalograss, blue gramma, little bluestem, etc.



# Improvements-Gulch Restoration

Native grass up close...



Native grass from a distance....



# Schedule

- October 2025– Mobilization of CEI for gulch restoration
- December 2025 – Mobilization of JHL for pedestrian bridge and storm sewer improvements
- February 2026 – End of heavy civil construction and native seeding
- May 2026 – Planting of turfgrass sod within park area adjacent to York Street
- Throughout 2026 – Vegetation establishment monitoring of native seeding area

# Impacts

- Detours for drivers will be in place when York St is closed
- Bike/ped detour route for bridge closure will remain in place
- Any changes to detours will be properly signed to alternative routes during construction



# Questions

# Thank you

[adam.lind@denvergov.org](mailto:adam.lind@denvergov.org)

Trails Program Manager  
Denver Parks and Recreation